



XPERIA SARAY BEACH HOTEL ****

Xperia Saray Beach Hotel (****) is located in the center of Alanya, on the world-famous Turkish Riviera. It is the pearl of the Mediterranean coast, where sun, sea, and sand come together with fantastic historical impressions. The hotel is directly situated on the famous Kleopatra Beach. Antalya Airport is 120 km away, and Gazipasa Airport is 40 km away.. Antalya Airport is 120 km away, and Gazipasa Airport is 40 km away.

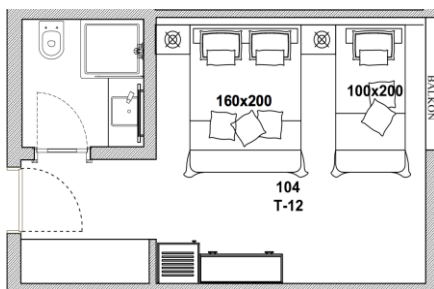
Check-in time:	14:00
Check-out time:	12:00
Number of floors:	7
Number of rooms:	Total 70 rooms
Room categories:	9 Standard No Balcony Rooms + 40 Standard Rooms + 8 Standard no balcony Triple Room + 3 Suite Room + 8 Xperian Deluxe + 1 Xperian Deluxe Loft + 1 Handicapped Room
Year of Construction:	1999
Last Renovation:	2013

ACCOMODATION: The hotel features 70 well-appointed rooms in various categories, including Standard, Suite, Xperian Deluxe, and Loft rooms. All rooms are equipped with flat-screen satellite TV, Wi-Fi, minibar, kettle, safe box, air conditioning, and modern bathrooms with shower and hairdryer. Most rooms offer balconies with city, land, or sea views.

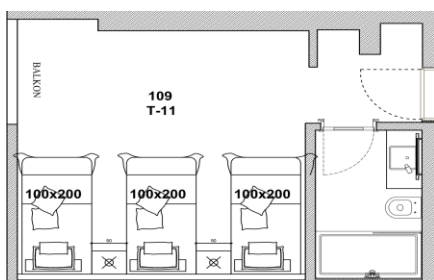
9 Standard No Balcony rooms: This room type accommodates up to 2 people. All rooms have French balconies and land or city views. Room size: 23 m².



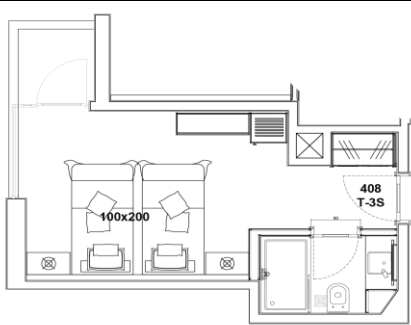
6 Standard No Balcony Triple Rooms: This room type accommodates up to 3 people. The room has 1 king-size French bed for 2 people and 1 twin bed for 1 person. French balcony with land view. Room size: 24 m².



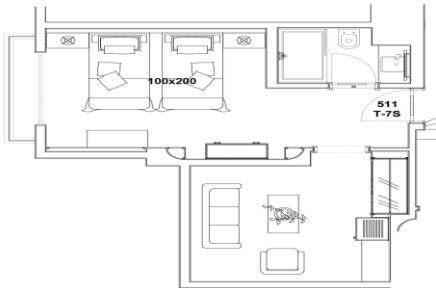
2 Standard No Balcony Triple Rooms: This room type accommodates up to 3 people. The room has 3 separate twin beds, French balcony, land view. Room size: 26 m².



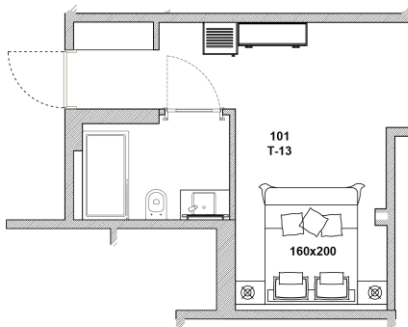
40 Standard Rooms: This room type accommodates up to 2 people. All rooms have balconies with side sea view. Room size: 18 m² + 2 m² balcony.



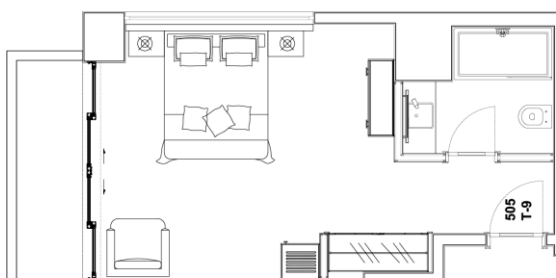
3 Suite Room: Accommodates up to 4 people. Includes 1 king-size French bed for 2 people and 1 sofa bed for 2 people. French balcony with land view. Room size: 32 m².



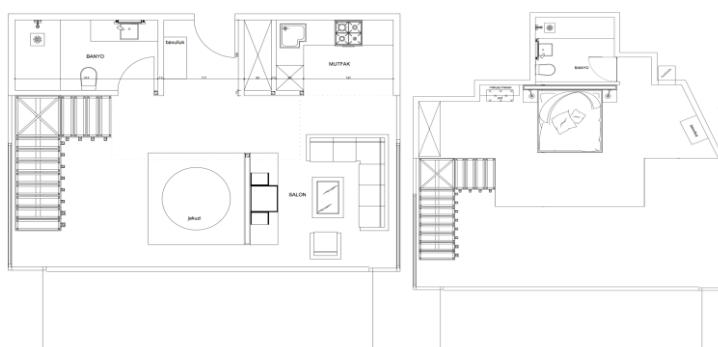
1 Handicapped Room: This room type accommodates up to 2 people. Includes 1 king-size French bed, French balcony, land view. Bathroom and room facilities are adapted for handicapped guests. Room size: 26 m².



8 Xperian Deluxe: Accommodates up to 3 people. 1 king-size French bed for 2 people and 1 sofa bed for 1 person. Balcony with direct sea view. Room size: 25 m² + 5 m² balcony.



1 Xperian Deluxe Loft: Accommodates up to 4 people. Includes 1 imperial-size bed (180x200 cm) for 2 adults and 1 sofa bed for 2 adults. Mezzanine, in-room Jacuzzi, kitchenette, 3 bathrooms, sea view. Room size: 55 m² entrance floor + 25 m² mezzanine + 11 m² balcony.



ACTIVITIES

FREE ACTIVITIES

Wellness

- Group yoga classes
- Group Zumba classes
- Use of the Turkish bath (subject to availability)
- Swimming (outdoor pool & children's pool (Both are heated up to 28 degrees during winter))
- Sunbathing (poolside and beach)

Evening Entertainment

Every evening between **21:30 and 23:30**, guests are invited to enjoy a dynamic entertainment program including:

- Live music performances
- Turkish Night with themed dinner, belly dance, and traditional shows
- Weekly themed party nights with special performances
- Karaoke, disco night, fashion shows, quiz nights, and more

Events take place in the hotel's outdoor show area, creating a vibrant social atmosphere by the sea.

Leisure & Games

- Table tennis
- Darts
- Card games
- Backgammon
- Chess

Sports Activities

- Access to the nearby basketball court
- **Private fitness gym:** A private indoor fitness gym is available free of charge at our sister hotel, **Xperia Grand Bali**, located just a **10-minute** walk away.

EXTRA ACTIVITIES (With Additional Charge)

Wellness & Spa

- Spa & massage services:
 - Sauna
 - Steam bath
 - Massage rooms
 - Thalasso therapy
- Hairdresser

Leisure & Services

- Shisha services

Sports Activities

- All water sports on the beach
- Access to the nearby tennis court
- Compact outdoor workout area, equipped with a pull-up bar, kettlebells, light dumbbells, and a plyo jump box

All-Inclusive Concept

Guests enjoy a rich all-inclusive experience including:

- Open buffet breakfast, lunch, and dinner
- Afternoon snacks, pastries, and cakes at X-Café
- **Beachside outdoor snack bar** serving light bites such as hamburgers, French fries, daily fried treats, waffles, apple tarts, and fresh fruit throughout the day
- Wide selection of **imported alcoholic** and non-alcoholic beverages
- Service points: Indoor restaurant, Pool Bar, Snack Bar (outdoor), X-Café

Note: *Certain premium imported drinks and à la carte meals are available at an additional charge.*

RESTAURANTS & BARS

INDOOR RESTAURANT: Capacity of 150 guests- breakfast, lunch and dinner served in a buffet style. Service times for Breakfast 08:00-10:00 Late Breakfast 10:00-10:30, Lunch 12:30-14:00, Dinner 19:00-21:00.

BEACH LIFE A'LA CARTE RESTAURANT & BAR: You can enjoy delicious Mediterranean cuisine at our à la carte restaurant, with a magnificent view of Alanya Castle and the Mediterranean Sea. Guests also have the option to arrange tables right by the sea. Our restaurant and bar is a popular meeting point for visitors. Service is available between 10:00 and 01:00.

POOL BAR: Capacity of 50 guests, alcoholic and non-alcoholic drinks are served. Service between 10:00 and 18:00.

Complimentary Beverages

- Wide selection of high-quality local and international drinks

Extra Beverages

- Premium imported drinks
- Premium cocktails

SNACK BAR: Beachside Snacks & Daily Treats

Capacity of 50 guests. All snacks are served between 11:00 and 17:00.

In addition to the open buffet meals, guests can enjoy a variety of freshly prepared snacks and sweet treats served throughout the day at our beachside snack area. Offerings include:

- Crispy French fries, hamburgers, and daily fried selections
- Warm waffles, apple tarts, and other pastries
- Fresh fruit hour
- Afternoon snack time with savory and sweet options

All served just steps away from the beach, perfect for light bites between meals.

X - CAFE: Capacity of 15 guests, various cakes, soft drinks, coffee and tea are served. Service between 10:00-00:00.

TV SALON & LOBBY BAR: Capacity of 20 guests, Flat-screen TV, separate Bar, Internet Corner, Guest Information from Tour Operators is also located in the Info Salon.

(Service time may differ with each season)

- 24-hour Reception and Welcome service
- Safe box available in rooms
- Luggage room service
- Free Towel Service (at the Pool and Beach)
- Wi-Fi (all public areas and in rooms)
- Pillow Menu
- Telephone
- Currency exchange & postal service
- Wake-up service
- Laundry, Dry-cleaning and Ironing service
- On-call Doctor
- Special gifts for Honeymoon or Wedding Anniversary guests.
- Early breakfast package upon request (please order at reception by 20:00 the day before if your excursion or check-out time is before breakfast hours)

Saray Mah. Atatürk Cad. No:151 07400 ALANYA / TÜRKİYE

Tel:+90 242 512 60 80 Tel:+90 505 290 09 45

<http://www.xperia.com.tr> E-mail: saraybeach@xperia.com.tr